



Effective: 01/01/2024
Supersedes: 01/01/2023

Organic Crushed Tomatoes - Hot Break 26% - 28% NTSS

PRODUCT DESCRIPTION

Concentrated crushed organic tomatoes produced at the Morning Star Packing Company shall be processed in accordance with Good Manufacturing Practices. The raw material shall conform in every respect to the provisions set forth under the Federal Food, Drug and Cosmetic Act, and meet the standards established by the California Department of Food and Agriculture. This product shall be in compliance with USDA and California Certified Organic Farmers (CCOF) requirements.

INGREDIENTS

100% Organic
Tomatoes

ORIGIN

Grown and manufactured
in the USA.

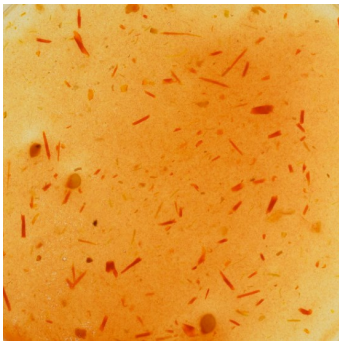
STORAGE

The product is to be kept from freezing.
Do not store at temperatures above 110° F.

CHEMICAL AND PHYSICAL SPECIFICATION (at time of pack)

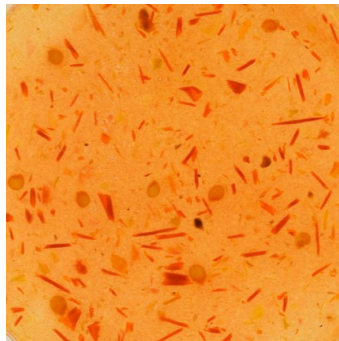
Measure	Specification	Description
NTSS:	26.0 ± 1.0 28.0 ± 1.0	NTSS = Natural Tomato Soluble Solids
Bostwick:	7.0 cm max	Measured at 12.0° brix for 30 seconds at 20.0°C.
pH:	4.30 ± 0.30	
Color (USDA Score):	Minimum 45.00	Measured at 8.5° brix using C2 illuminant.
Howard Mold Count:	≤ 40 %	Measured at 8.5° brix.
Meets CFR Title 21 requirements for commercial sterility.		

MORNING STAR PASTE FINISH STANDARDS OF IDENTITY



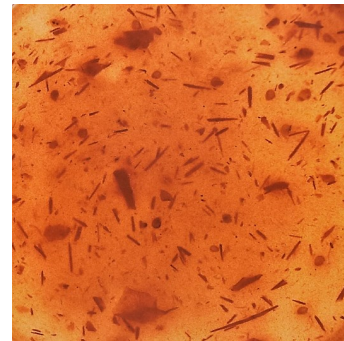
Fine Crushed Finish (FC)

Comparable to .078–.090
Long lengths of peel with
seeds and seed pieces.



Medium Crushed Finish (MC)

Comparable to .090–.125
Long sections of peel, many
whole seeds, pulp.



Coarse Crushed Finish (CC)

Comparable to .156–.250
Pieces of peel, whole seeds, and
tomato chunks.

TARGET FILL WEIGHT

55-Gal Fiber Drum Weight:
NET 525 ± 20 (lbs)

300-Gal Wood Bin Weight:
NET 2,880 ± 30 (lbs)

CALIFORNIA MANUFACTURING LOCATIONS

Santa Nella



LOT CODE INTERPRETATION



190729LBAA0928B

Pack Year (19) | Fill Month (07) | Fill Day (29)
Plant (SN) | Flash Cooler (A, B or C)
Filler (A-H) | Sequential Container Number (0928)
Container Type (B) or (B/D) = Wood/Plastic Bin;
F/M/P = Fiber/Metal/Plastic Drum