



# Industrial Aseptic Ketchup Base

## (033PK, 045PK, 060PK)

Effective: 01/01/2023  
Supersedes: 01/01/2022

### PRODUCT DESCRIPTION

Tomato puree, sugar, vinegar, salt, and a spice blend are combined and aseptically processed. The product is then filled into an aseptic bag. The ketchup is processed in accordance with Good Manufacturing Practices. The product shall conform in every respect to the provisions set forth under the Federal Food, Drug and Cosmetic Act, and shall meet the standards established by the California Department of Food and Agriculture unless otherwise specified below.

### INGREDIENTS

Tomato Puree, Sugar, Vinegar,  
Salt, Spice Blend

### ORIGIN

Grown and manufactured  
in the USA.

### STORAGE

The product is to be kept from freezing.  
Do not store at temperatures above 110° F.

### CHEMICAL AND PHYSICAL SPECIFICATION (at time of pack)

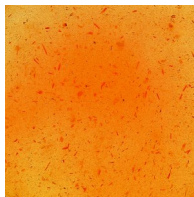
Measure	Specification	Description
Flavor and Odor:	+	Typical of formulated sauces; no off flavors.
Brix:	32.0 ± 2.0°	
Bostwick:	4.0 - 6.5 cm	Measured without dilution; 30 sec. at 20.0°C.
Color:	USDA Grade A	Measured without dilution using C2 Illuminant.
pH:	3.75 ± 0.15	
Salt:	2.50% - 3.20%	
Finish and Product Code:	Medium = 033PK    Very Coarse = 060PK Coarse = 045PK	Per customer requirements.
Howard Mold Count:	≤ 55 %	
<b>Meets CFR Title 21 requirements for commercial sterility.</b>		

### MORNING STAR PASTE FINISH STANDARDS OF IDENTITY



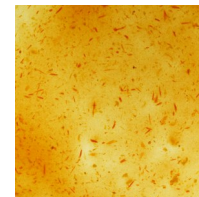
#### Medium Finish (MF)

Comparable to .033 - .060  
Some flecks of peel and no seeds.



#### Coarse Finish (CF)

Comparable to .045 - .060  
Fair amount of peel and some seed pieces.



#### Very Coarse Finish (VCF)

Comparable to .060 - .078  
Fair amount of peel, some seed pieces.

### TARGET FILL WEIGHT

55-Gal Fiber Drum Weight:    300-Gal Wood Bin Weight:  
NET ??? ± 20 (lbs)                NET ??? ± 30 (lbs)

### CALIFORNIA MANUFACTURING LOCATIONS

Santa Nella



### LOT CODE INTERPRETATION



**190729LBAA0928B**

Pack Year (19) | Fill Month (07) | Fill Day (29)  
Plant (SN) | Flash Cooler (A, B or C)  
Filler (A-H) | Sequential Container Number (0928)  
Container Type (B) or (B/D) = Wood/Plastic Bin;  
F/M/P = Fiber/Metal/Plastic Drum)