



Organic Tomato Paste - Cold Break

29% - 37% NTSS

Effective: 01/01/2023
Supersedes: 01/01/2022

PRODUCT DESCRIPTION

Organic tomato paste produced at the Morning Star Packing Company shall be processed in accordance with Good Manufacturing Practices. The raw material shall conform in every respect to the provisions set forth under the Federal Food, Drug and Cosmetic Act, and meet the standards established by the California Department of Food and Agriculture. This product shall be in compliance with USDA and California Certified Organic Farmers (CCOF) requirements.

INGREDIENTS

100% Organic
Tomatoes

ORIGIN

Grown and manufactured
in the USA.

STORAGE

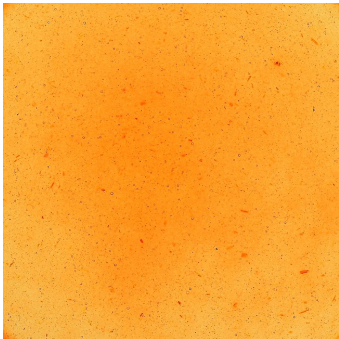
The product is to be kept from freezing.
Do not store at temperatures above 110° F.

CHEMICAL AND PHYSICAL SPECIFICATION (at time of pack)

Measure	Specification	Description
NTSS:	29.0 ± 1.0 31.0 ± 1.0 36.0 ± 1.0 37.0 ± 1.0	NTSS = Natural Tomato Soluble Solids
Bostwick:	4.0 - 12.0 cm	Measured at 12.0° brix for 30 seconds at 20.0°C.
pH:	4.30 ± 0.30	
Color (USDA Score):	Minimum 48.00	Measured at 8.5° brix using C2 illuminant.
Howard Mold Count:	≤ 40 %	Measured at 8.5° brix.

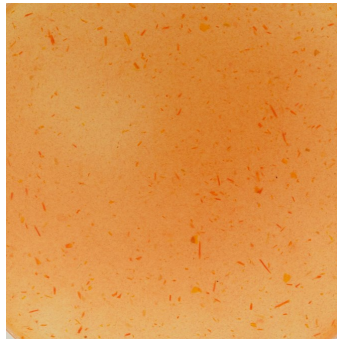
Meets CFR Title 21 requirements for commercial sterility.

MORNING STAR PASTE FINISH STANDARDS OF IDENTITY



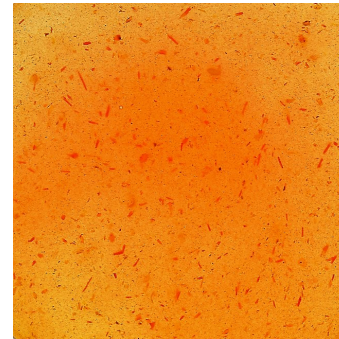
Fine Finish (FF)

Comparable to .027-.045
Smoothest texture, no
seeds, almost no pulp.



Medium Finish (MF)

Comparable to .033-.060
Some flecks of peel and no
seeds.



Coarse Finish (CF)

Comparable to .045-.060
Fair amount of peel and
some seed pieces.

TARGET FILL WEIGHT (NET)

55-Gal Fiber Drum Weight:

29% - 525 ± 20 (lbs)

31% - 530 ± 20 (lbs)

36% - 535 ± 20 (lbs)

37% - 535 ± 20 (lbs)

300-Gal Wood Bin Weight:

29% - 2,890 ± 30 (lbs)

31% - 2,920 ± 30 (lbs)

36% - 2,930 ± 30 (lbs)

37% - 2,930 ± 30 (lbs)

LOT CODE INTERPRETATION



190729LBAA0928B

Pack Year (19) | Fill Month (07) | Fill Day (29)

Plant (SN) | Flash Cooler (A, B or C)

Filler (A-H) | Sequential Container Number (0928)

Container Type (B) or (B/D) = Wood/Plastic Bin;

F/M/P = Fiber/Metal/Plastic Drum)

CALIFORNIA MANUFACTURING LOCATIONS

Santa Nella

